



Title	Farin – Access to Farin iPrice through Citrix Xenapp
Create Date	4/25/2011
Author	SRB
Last Updated	3/12/2012 9:30 AM
Last Updated By	SRB

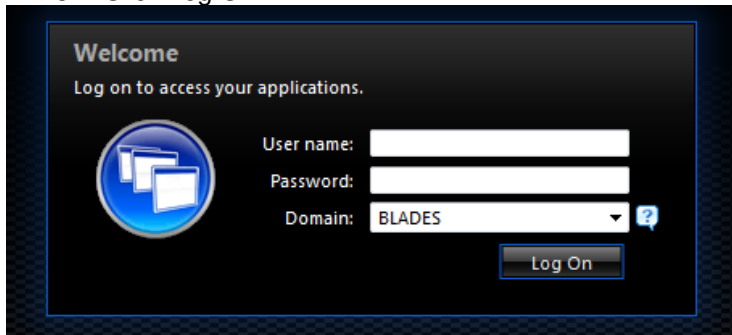
Installation Source:
Vendor Documentation:
This document:



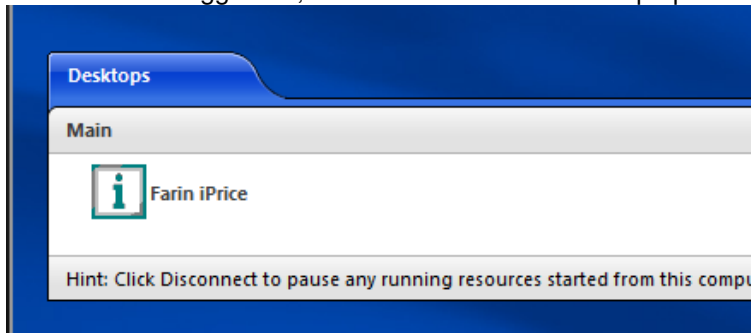
Farin iPrice may now be accessed using a secure web connection to connect to a Citrix Xenapp 6.0 server farm. Using a SSL encrypted browser connection to Citrix Secure Gateway web access point, clients will be directed to sessions on one of the application servers in the Citrix Xenapp farm. The only connection required from your institutions network is HTTPS access to the Internet on TCP port 443.

To access Farin iPrice via Citrix XenApp: ** (for your first connection, you will need to install the Citrix Receiver software to load the plug-ins required for connection. Please refer to the additional notes below)

1. Open your web browser and connect to <https://iprice.farin.com> – please ensure you use the HTTPS prefix for the web site
2. Enter your username and password in the appropriate boxes
3. Click Log On



4. When logged on, click the Farin iPrice desktop option:





5. PLEASE NOTE: Citrix XenApp is configured to launch FULL SCREEN – **in order to resize the connection or access your own desktop, please press SHIFT + F2.** This will switch to a “windowed” view of the XenApp connection and allow you to resize it
6. Within the XenApp desktop, click on the Start button, then All Programs to access the Farin iPrice application.
7. When you have finished using Farin iPrice, please close any applications running within your XenApp session, click Start and select Log Off

****** Additional requirements for your first connection:

- If you have not already done so, please add <https://iprice.farin.com> to your trusted sites in your Internet browser. Please consult your particular web browser’s help system for instructions
- Clients will need to install the latest Citrix Receiver to load plug-ins required for connectivity. To directly download the receiver from Citrix, please see: http://www.citrix.com/lang/English/lp/lp_2309126.asp?ntref=DLpromo1 – please follow the download instructions.
- The Citrix web pages are updated frequently, so if the above link is no longer valid, please contact Farin & Associates, Inc. for assistance.